

CAST IRON

DOUBLE BALL AIR RELEASE VALVE

INTRODUCTION

The inclusion of air in water can have a very considerable negative effect on the functioning of a pipeline system, such as

- Reduction of flow
- pressure fluctuations
- water hammer
- dry running of pumps

Leader Air Release Valve typically designed to mount at the high points in a piping system to automatically remove pockets of air as they accumulate. The valve can also be used to slowly release air in tanks and pump casings.

- PRINCIPAL FEATURES**
- Float-operated, resilient-seated valve designed to handle clean fluids.
 - Double Ball Type, EPDM Coated Wooden Balls.
 - Used to release entrapped air in any piping system.
 - Maintains system flow efficiency.
 - Temper Proof design, eliminates wastage of water.
 - Flanges as per BS:4504 PN10 (FF) Drilled.
 - An isolating valve must be provided below the air release valve to isolate it while doing the maintenance in the air release valve.
 - Widely accepted by Municipal Corporations, Irrigation Authorities, Water Supply Authorities, National Thermal Power Corporation, Nuclear Power Corporation and Industrial users.

END CONNECTION

Flanges as per BS:4504 PN10 (FF) Drilled.
Flange drilling as per other standards also available upon request.

UTILISATION & SERVICE

Best suited for potable water & treated fresh water.

WORKING PRESSURE & TEMPERATURE LIMITS

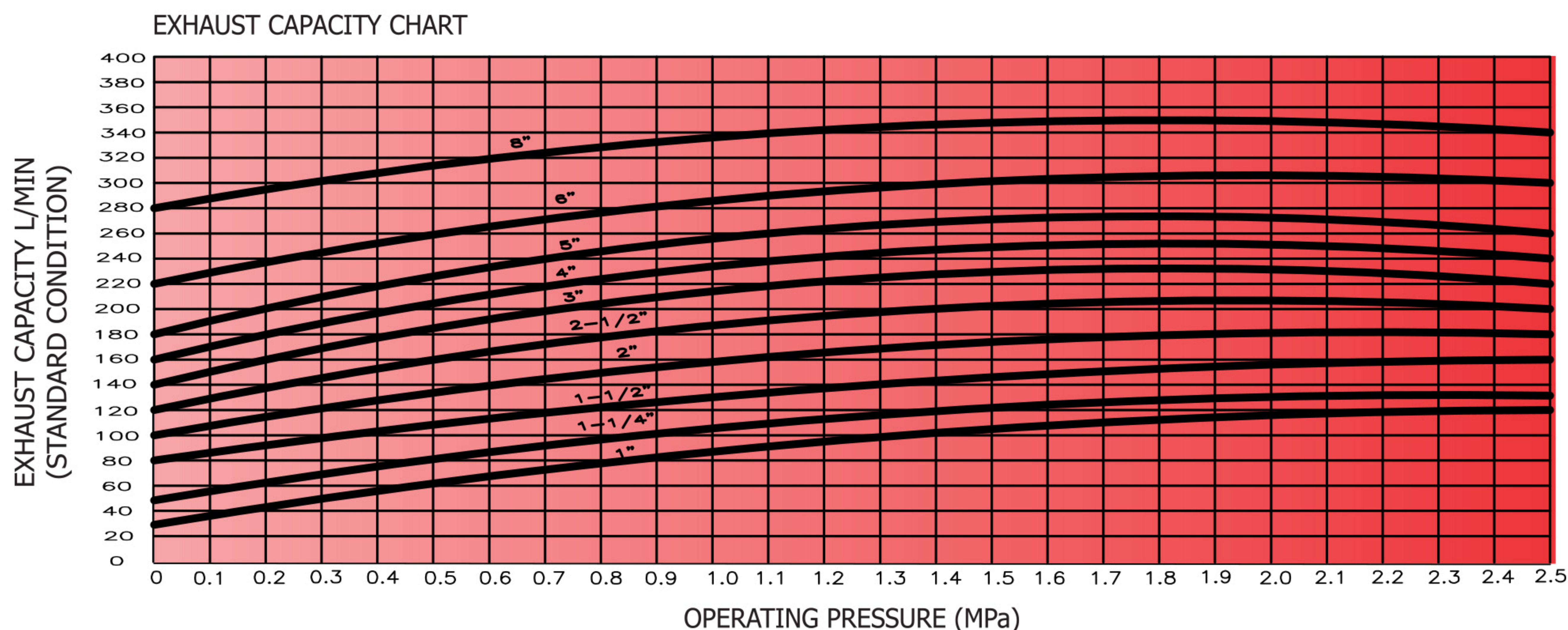
Maximum Working Pressure: 10 Bar.
Maximum Working temperature: 80°C.
See Pressure / Temperature Diagram.

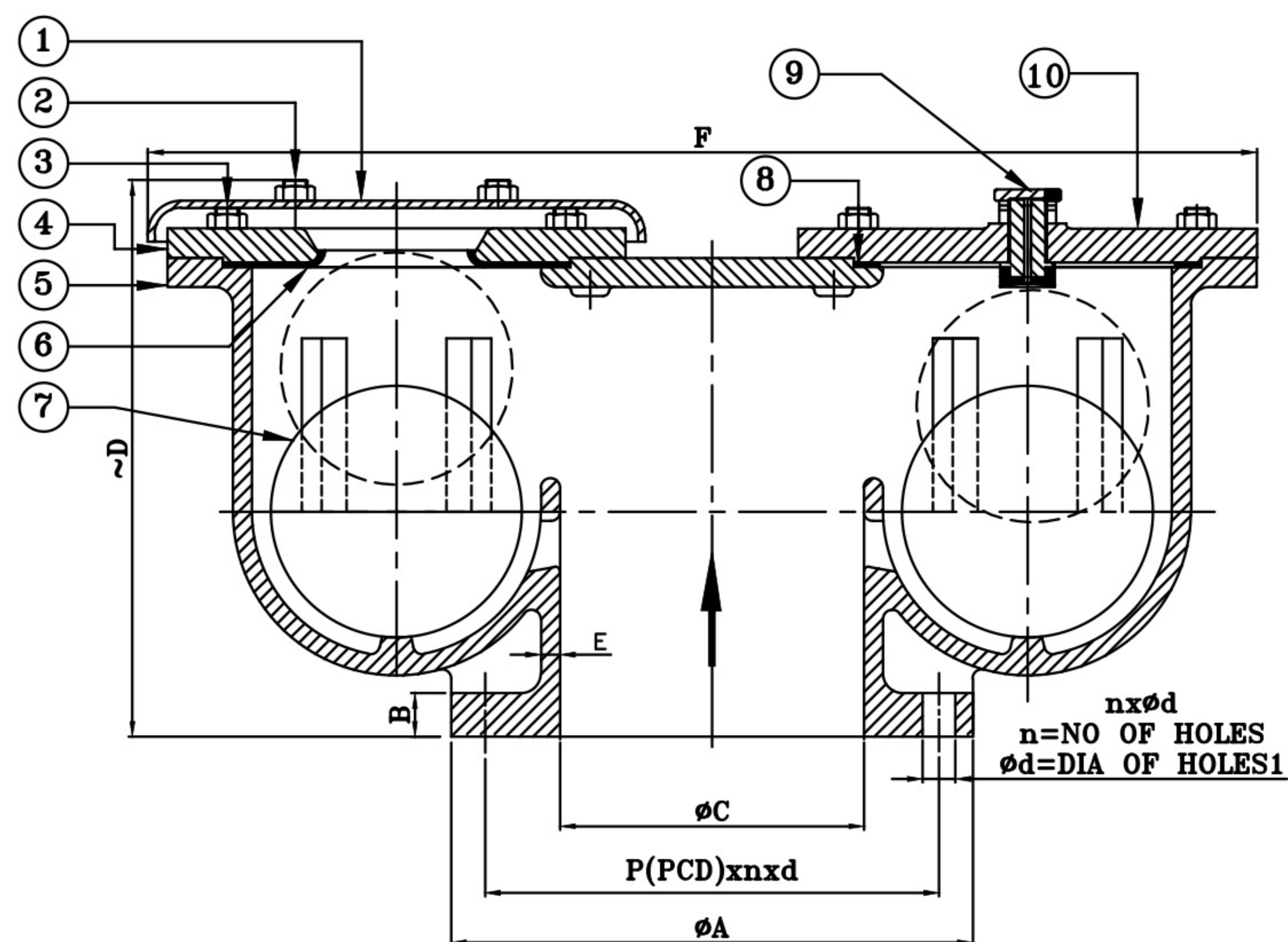


- **Item Code:** CI0026
- **Pressure Rating:** PN-10 & PN-16
- **Testing Standard:** Mfg. Standard
- **Size Range:** 25mm to 200mm
- **Product Standard:** Mfg. Standard

SUITABLE FOR			
Water	Oil	Air	Gases
✓			

TEST PRESSURE (Hydrostatic)		
Rating	PN-10	PN-16
Body (Hyd.)	16 Bar	24 Bar
Seat (Hyd.)	11 Bar	17.6 Bar





MATERIAL SPECIFICATION

P.No.	NAME OF PART	MATERIAL
1	COVER PLATE	STEEL
2	BOLTS AND NUTS	CARBON STEEL (BS 916)
3	STUDS AND NUTS	CARBON STEEL (BS 916)
4	COVER	CAST IRON (BSEN 1561 Gr.200)
5	BODY	CAST IRON (BSEN 1561 Gr.200)
6	SEAT RING	SYNTHETIC RUBBER (IS 638 TYPE B)
7	BALL	EPDM COATED WOODEN BALL
8	PACKING RING	SYNTHETIC RUBBER (IS 638 TYPE B)
9	NIPPLE (RUBBER COATED)	GUN METAL (BSEN 1982 CC491K) / STAINLESS STEEL (ASTM A182 Gr. F6a)
10	COVER	CAST IRON (BSEN 1561 Gr.200)

DIMENSIONAL DATA

SIZE (mm)	25	40	50	65	80	100	150	200
ØA	115	150	165	185	200	220	285	340
B	16	18	20	20	22	24	26	26
ØC	25	38	50	65	76	100	150	200
~D	217	245	221	265	292	320	370	370
E	8	8	9.5	9.5	11	11	12.7	12.7
F	293	356	356	435	435	524	680	737
P	85	110	125	145	160	180	240	295
n	4	4	4	4	8	8	8	8
Ød	14	19	19	19	19	19	23	23